



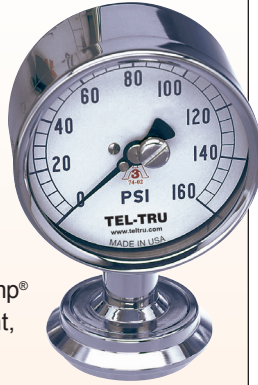
TEL-TRU MANUFACTURING COMPANY

SANITARY PRESSURE GAUGES

Heavy duty waterproof construction • CIP • Pulsation dampening system
 Rezero feature • Repairable

Food and Dairy Line 3580

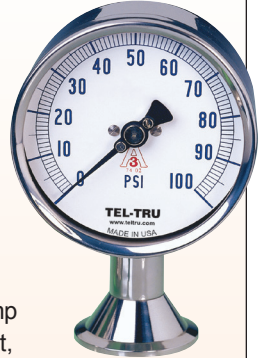
Dial size: 3½"
 Accuracy: ±1.5% FS
 Case: 304 SS
 Fill: Food grade glycerine
 Reset: Adjustable pointer
 Wetted Mat.: 316L SS or Teflon®
 Lens: Polycarbonate
 Pointer: Aluminum
 Connection: 1½, 2, 2½, or 3" Tri-Clamp®
 Center back, lower, right,
 left, or top mount
 Range: 30" Hg to 1,000 psi
 Scale: PSI or dual PSI/Bar



Also available - **Model 5080**, 5" dial

Chem Line 3581

Dial size: 3½"
 Accuracy: ±.75% FS
 Case: 304 SS
 Fill: Food grade glycerine
 Reset: Adjustable pointer
 Wetted Mat.: 316L SS with PTFE
 Coating
 Lens: Tempered glass
 Pointer: Aluminum
 Connection: 1½, 2, 2½, or 3" Tri-Clamp
 Center back, lower, right,
 left, or top mount
 Range: 30" Hg to 1,000 psi
 Scale: PSI or dual PSI/Bar



Also available - **Model 2581**, 2½" dial
Model 5081, 5" dial

Pharma Line 3583

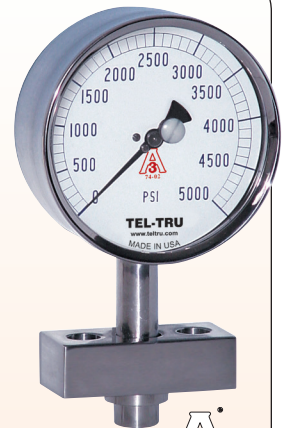
Dial size: 3½"
 Accuracy: ±.75% FS
 Case: 304 SS
 Fill: Food grade glycerine
 Reset: Adjustable pointer
 Wetted Mat.: 316L SS
 Lens: Polycarbonate
 Pointer: Aluminum
 Connection: 1½, 2, 2½, or 3" Tri-Clamp
 Center back, lower, right,
 left, or top mount
 Range: 30" Hg to 1,000 psi
 Scale: PSI or dual PSI/Bar



Also available - **Model 2583**, 2½" dial
Model 5083, 5" dial

Homogenizer Line 5084

Dial size: 5"
 Accuracy: ±1% FS
 Case: 304 SS
 Fill: Food grade glycerine
 Reset: Adjustable pointer
 Wetted Mat.: 316L SS
 Lens: Polycarbonate
 Pointer: Aluminum
 Connection: Homogenizer
 Lower mount
 Range: 1,000 to 15,000 psi
 Scale: PSI or dual PSI/Bar



Teflon® is a registered trademark of E. I. du Pont de Nemours and Company or its affiliates
 Tri-Clamp® is a registered trademark of Alfa Laval Inc. Corporation

Temperature + Pressure

Since
1916

How to Order

Ordering Example: Chem Line, 3½" dial, PTFE Coated 316L SS wetted parts, 304 stainless steel case, 2" Tri-Clamp connection size, Lower location, 0-160 psi & 0-11 bar range, Dry case.

A B C D E F G H I

3	5	8	1	8	S	9	L	A	E	4	F	*	T
---	---	---	---	---	---	---	---	---	---	---	---	---	---

Key: X = Available S = Standard

Ranges

	CODE	80	81	83	84
0-30 psi	C6A	X	X	X	
0-60 psi	D6A	X	X	X	
0-100 psi	D9A	X	X	X	
0-160 psi	E4A	X	X	X	
0-200 psi	E5A	X	X	X	
0-300 psi	E8A	X	X	X	
0-400 psi	F2A	X	X	X	
0-600 psi	F4A	X	X	X	
0-1000 psi	F8A	X	X	X	X
0-2500 psi	H7F				X
0-3000 psi	H9A				X
0-4000 psi	J4A				X
0-5000 psi	J8A				X
0-7500 psi	K2F				X
0-10000 psi	K4A				X
0-15000 psi	K7A				X
30-0-30 psi	Z2A	X	X	X	
30-0-60 psi	Z3A	X	X	X	
30-0-100 psi	Z4A	X	X	X	
30-0-150 psi	U6A	X	X	X	
30-0-200 psi	Z6A	X	X	X	
30-0-300 psi	Z7A	X	X	X	
0-30 psi & 0-2 bar	C6F	X	X	X	
0-60 psi & 0-4 bar	D6F	X	X	X	
0-100 psi & 0-7 bar	D9F	X	X	X	
0-160 psi & 0-11 bar	E4F	X	X	X	
0-200 psi & 0-14 bar	E5F	X	X	X	
0-300 psi & 0-20 bar	E8F	X	X	X	
0-400 psi & 0-28 bar	F2F	X	X	X	
0-600 psi & 0-40 bar	F4F	X	X	X	
0-1000 psi & 0-70 bar	F8F	X	X	X	X
0-2500 psi & 0-170 bar	H7F				X
0-3000 psi & 0-200 bar	H9F				X
0-4000 psi & 0-275 bar	J4F				X
0-5000 psi & 0-350 bar	J8F				X
0-7500 psi & 0-520 bar	K2F				X
0-10000 psi & 0-700 bar	K4F				X
0-15000 psi & 0-1000 bar	K7F				X
30-0-30 psi & 1-0-2 bar	Z2Z	X	X	X	
30-0-60 psi & 1-0-4 bar	Z3Z	X	X	X	
30-0-100 psi & 1-0-7 bar	Z4Z	X	X	X	
30-0-150 psi & 1-0-10 bar	U6Z	X	X	X	
30-0-200 psi & 1-0-15 bar	Z6Z	X	X	X	
30-0-300 psi & 1-0-20 bar	Z7Z	X	X	X	

Other ranges are available, including PSI/Kg/cm² and PSI/KPa.

Repair Service

Repair service available for all sanitary pressure gauge units. Please refer to individual sheets or price list for order information.

Other connection sizes and types are available, consult factory. Product specifications and pricing are subject to change without notice.

Code	Description	Available											
A	Model												
	3580 Food and Dairy Line, 3½" dial											3580 ▼	
	5080 Food and Dairy Line, 5" dial											5080 ▼	
	2581 Chem Line, 2½" dial											2581 ▼	
	3581 Chem Line, 3½" dial											3581 ▼	
	5081 Chem Line, 5" dial											5081 ▼	
	2583 Pharma Line, 2½" dial											2583 ▼	
	3583 Pharma Line, 3½" dial											3583 ▼	
	5083 Pharma Line, 5" dial											5083 ▼	
	5084 Homogenizer Line, 5" dial											5084 ▼	
B	Materials - Wetted Parts												
	1 316L SS	S	S	S	S							S	S
	7 Teflon											X	X
	8 PTFE Coated 316L SS							S	S	S			
C	Case												
	S 304 Stainless steel	S	S	S	S	S	S	S	S	S	S	S	S
D	Connection Size												
	8 1½" Tri-Clamp		X	X	X	X	X	X	X	X	X	X	X
	9 2" Tri-Clamp		X	X	X	X	X	X	X	X	X	X	X
	A APV Gaulin with 7/8" 2 Bolt Flange	X											
	B APV Gaulin with 1½" 2 Bolt Flange	X											
	E 2½" Tri-Clamp		X	X	X							X	X
	F 3" Tri-Clamp		X	X	X							X	X
	C APV Gaulin without Flange	X											
	J Waukesha Fitting with ½" 4 Bolt Flange	X											
	K Waukesha Fitting with ¾" 4 Bolt Flange	X											
	D Laboratory Homogenizer with 1.66" 2 Bolt Flange	X											
	G APV Rannie without Flange	X											
	H Niro/Soavi Fitting with 15/16" 2 Bolt Flange	X											
E	Connection Location												
	C Center back		X	X	X	X	X	X	X	X	X	X	X
	L Lower	X	X	X	X	X	X	X	X	X	X	X	X
	V Right side		X	X	X	X	X	X	X	X	X	X	X
	W Left side		X	X	X	X	X	X	X	X	X	X	X
	T Top		X	X	X	X	X	X	X	X	X	X	X
F	Connection Type												
	A Tri-Clamp		S	S	S	S	S	S	S	S	S	S	S
	E Homogenizer	S											
	J G&H "H" Line Male		X	X	X							X	X
	K Cherry-Burrell Male I-Line		X	X	X							X	X
	N DIN40 (accord. to DIN 11851)											X	X
	P DIN50 (accord. to DIN 11851)											X	X
	Q SMS38											X	X
	R SMS51											X	X
G	Range and Scale												
	xxx See Range Chart												
H	Options* Insert codes only if not standard but required												
	L Glass Lens		X	X	X	X	S	S	S	S	X	X	X
	P Polycarbonate Lens		S	S	S	S	X	X	X	X	S	S	S
	D Drag Pointer		X	X	X					X	X	X	X
	0 Extra Dampening		X	X	X	X	X	X	X	X	X	X	X
	I High Temperature Option		X	X	X	X	X	X	X	X	X	X	X
I	Case Fill												
	G Glycerine Filled	S	S	S	S	S	S	S	S	S	S	S	S
	T Dry case	X	X	X	X	X	X	X	X	X	X	X	X



Tel-Tru Manufacturing Company

408 St. Paul St., Rochester, New York 14605 USA

Phone: 585.232.1440 • 800.232.5335 • Fax: 585.232.3857 • E-mail: info@teltru.com • Web: www.teltru.com

SPG414

© 2014